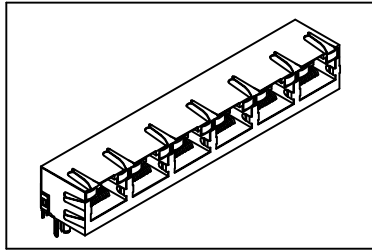


5014 Series

Modular Jack With LED



Features:

- * PCB mount Right Angle type.
- * With LED build in.
- * 1-8 ports available.

Material:

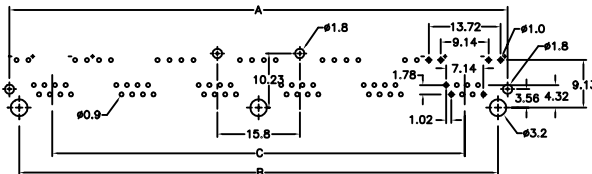
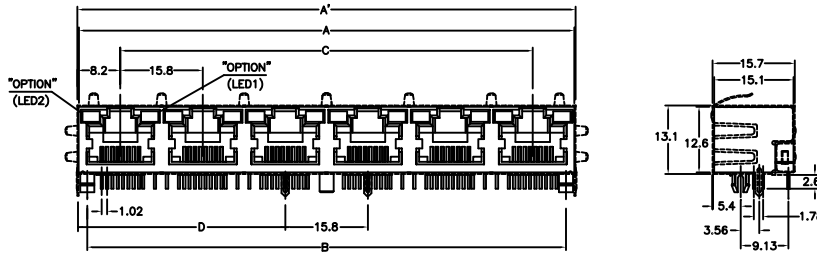
Housing & Led: 30% Glass filled PBT UL94V-0.
 Contacts: Phosphor Bronze.
 Shield: 0.25mm Bass, Nickel plated.
 Plating: Selective Gold plated on contact area over Nickel.

Electrical Characteristics:

Current Rating: 2 AMP.
 Insulator Resistance: 5000MΩmin. at DC 500V.
 Contact Resistance: 30mΩmax. at DC 100mA.
 Operating Temperature: -55°C ~ +105°C.
 Capacitance: 1.5pF max between adjacent contacts.

Mechanical Characteristics:

Durability: 250 cycles.
 Retention Force: 7.7kg between jack & plug.
 Max Total Mating Force: 2 contacts loaded-350g.
 4 contacts loaded-500g.
 6 contacts loaded-750g.
 8 contacts loaded-900g.



P.C. Board Layout
(Top View)

Port Dim	1 Port	2 Port	4 Port	6 Port	8 Port
A'	16.4	32.2	63.8	95.4	127.0
A	15.9	31.6	63.2	94.8	126.4
B	12.7	28.5	60.1	91.7	123.3
C		15.8	47.4	79.0	110.6
D			22.1	39.8	55.6

Ordering information

5014 Series 8 Pos. 8 Pin 1 1-8 Ports /50 50: 50μF S: Shield 1: With Grounding 0: W/O Grounding A: LED1: Green, LED2: Yellow B: LED1: Green, LED2: Green C: LED1: Yellow, LED2: Green D: LED1: Yellow, LED2: Yellow E: LED1: G+Y, LED2: Green BLK: Black